

Servicing Instructions

Safety Precautions – before commencing

1. Ensure that all propellant gas has been expelled from the extinguisher. Completely de-pressurise it by inverting the extinguisher and squeezing the operating lever.
2. Safety glasses and gloves should be worn as eye and skin irritation may occur upon frequent or prolonged contact with dry powder. Dust masks should also be worn as the dry powder may cause sneezing or slight irritation of the nose and throat.
3. Do not mix different types or different brands of dry powders. This can result in a pressure increase within the cylinder, creating a hazardous situation.
4. Check the date of the last pressure test, which will have been recorded on the maintenance tag. If pressure testing is required, it must be carried out before any recharging of the extinguisher takes place. Refer to AS 1851.1 or NZS 4503 for pressure test requirements as applicable.

Recharging Instructions

1. Remove hose assembly 2.0 kg, 2.3 kg, 4.5 kg and 9.0 kg units from valve and remove valve assembly from the extinguisher body. Unscrew slowly, if there is any residual pressure an audible sound will be noticeably heard. The valve should not be further removed until the sound ceases.
2. Empty and discard all residual dry powder from the cylinder. Note: NEVER re-use old powder.
3. Unscrew siphon tube and siphon tube adaptor nut from valve assembly.
4. Remove the spring and valve check stem assembly from the valve body. Clean the check stem, spring and internal valve body with a soft cloth and compressed air, ensuring all deposits of dry powder are removed.
5. Remove the neck seal O’ring from the valve, replace with new O’ring. Lubricate O’ring lightly with petroleum jelly, clean O’ring groove on the valve and mount O’ring into its seating groove making sure it is not twisted.
6. Examine the check stem seating surface and O’ring for cuts and scratches. Replace with new check stem assembly if damaged. Lightly lubricate the check stem small O’ring with petroleum jelly (use sparingly) and avoid getting any on the check stem seating surfaces. Return check stem and spring to valve body.
7. Clean the siphon tube and adaptor nut with a soft cloth and blow compressed air through to ensure clear passage and all powder deposits are removed. Screw the siphon tube and adaptor nut hand tight back into the valve assembly.
8. Visually inspect the interior of the cylinder for any corrosion or foreign materials. If the cylinder is corroded the extinguisher should be replaced. If foreign materials are present, thoroughly clean and dry the cylinder before refilling.

9. Fill extinguisher with correct amount of dry powder as stated on the label. The weight of the dry powder is critical. Over or under filling may render the extinguisher ineffective.

Powder Table	
Models	Powder
BE	Resil BC
0.9 ABE	Resil ABC 55
1.0, 2.0, 4.5 and 9.0 ABE	Kerr Fire ABC 70
4.5 extended	Orchidee ABC Royal

10. Clean the dry powder from the neck threads with a stiff bristle brush. Make sure the O’ring seat in the top of the neck ring is clean and free of powder.

11. Screw the valve assembly into the cylinder by centering the siphon tube carefully in the middle of the neck ring opening. Push down into the powder, making sure the valve thread is lined up with the neckring threads. Screw the valve assembly home into the cylinder until the shoulder on the valve body is compressing the O’ring seal hard onto its seat in the top of the neckring. Note: The valve should not be tightened by excessive force. A firm hand tightening will be sufficient.

12. Pressurise with dry nitrogen, this will require a charging adaptor that fits onto the valve outlet. Fit adaptor and connect the pressurizing line to charging adaptor, set the system pressure to a maximum of 150 kPa above the extinguisher working pressure. Open the system pressure control valve, depress extinguisher operating lever, and charge extinguisher with dry nitrogen to its correct working pressure of 1035 kPa for the 0.8 kg, 0.9 kg, 1.0 kg and 2.0 kg unit and 1345 kPa for the 2.3 kg, 4.5 and 9.0 kg. This pressure to be taken from the pressurising line gauge and not the extinguisher gauge. Note: Check if extinguisher gauge pointer is in the green operating range, if not replace gauge or valve assembly for 1.0 kg ABE (see pag. 5)

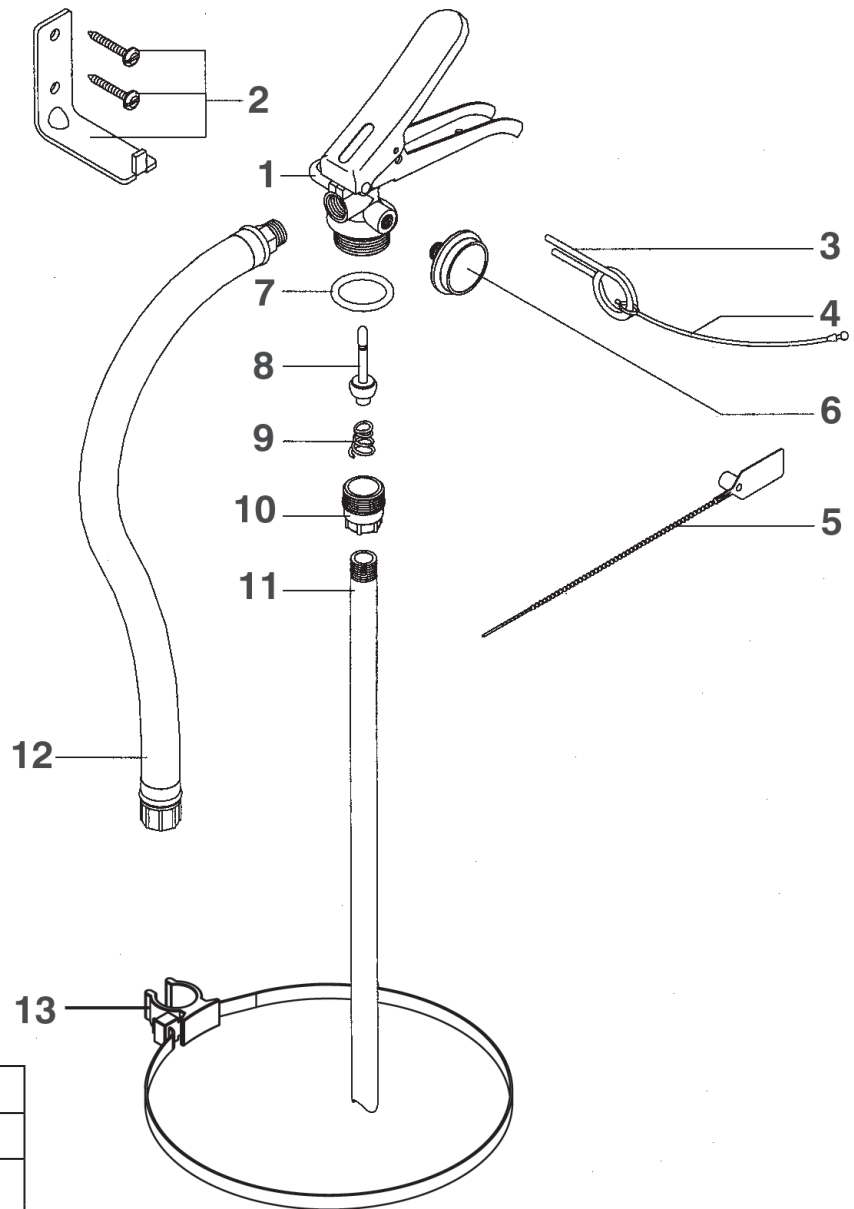
13. Upon reaching the working pressure of the extinguisher close the extinguisher valve by releasing the operating lever. Turn off the system nitrogen supply and release line pressure by opening the system pressure release valve. Engage extinguisher safety pin on 0.8 kg, 0.9 kg, 1.0 kg, 4.5 and 9.0 kg models, ensure carry handle is in the down position for the 2.0 kg and 2.3 kg models. Disconnect supply line from the charging adaptor and remove the pressurising adaptor from the valve outlet.

14. Leak Test – Place extinguisher on a rack with the valve outlet facing upwards. Fill valve outlet with a mixture of water and detergent, no bubbles should form in this solution if valve has sealed correctly. Apply solution to cylinder neck to valve joint, and around pressure gauge joint, no bubbles should appear at these joints. Note: if bubbles appear repeat recharging instructions, using “trouble shooting” guide below.

15. If no leaks detected drain all solution from valve and dry thoroughly. Fit anti-tamper seal and refit hose assembly.

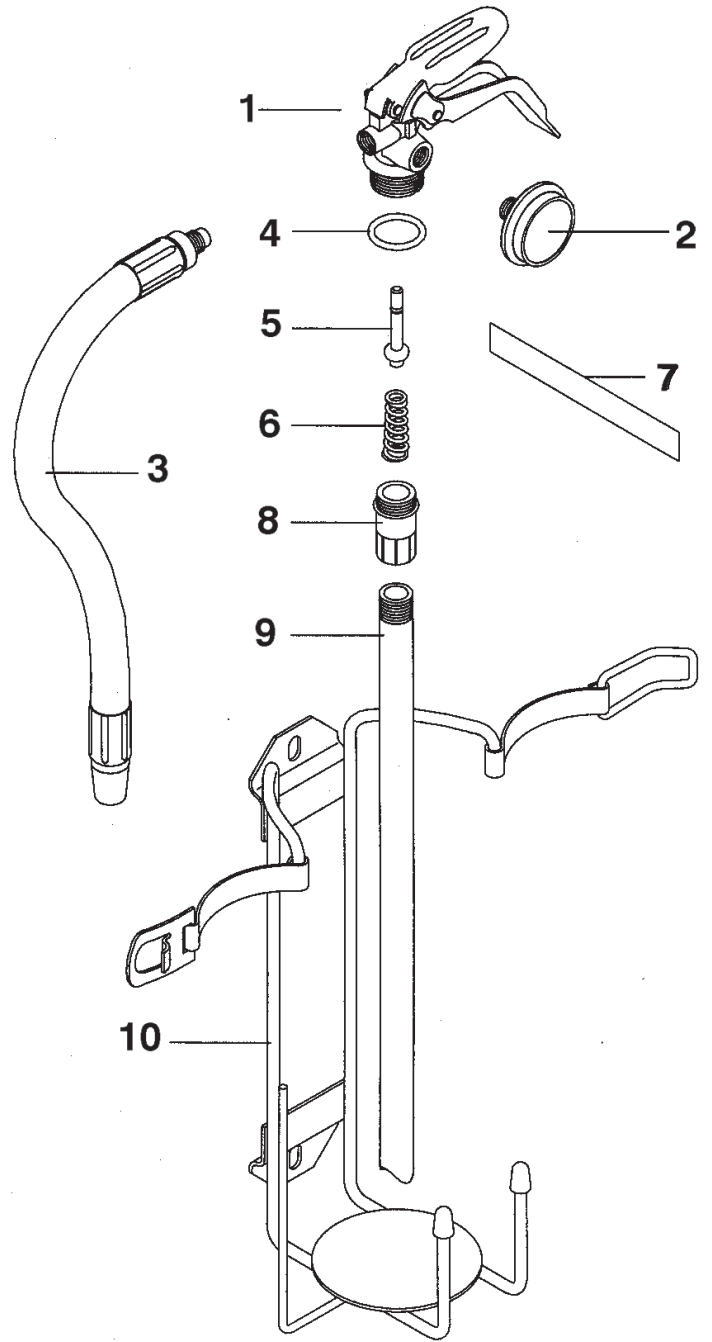
Trouble Shooting

Leakage at neck joint.	Remove valve and replace the valve neck O’ring. Ensure all sealing surfaces are clean, lubricate O’ring with petroleum jelly.
Leakage at valve outlet.	Remove valve and disassemble. Clean all components, making sure all sealing surfaces are clean, examine valve check stem assembly. Replace any damaged components and reassemble.
Leakage at pressure gauge threads.	Remove gauge, clean threads and re-install using Loctite 222.
Leakage at pressure gauge.	Replace gauge, gauges cannot be repaired. For 1.0 kg ABE replace valve assembly (see pag. 5).



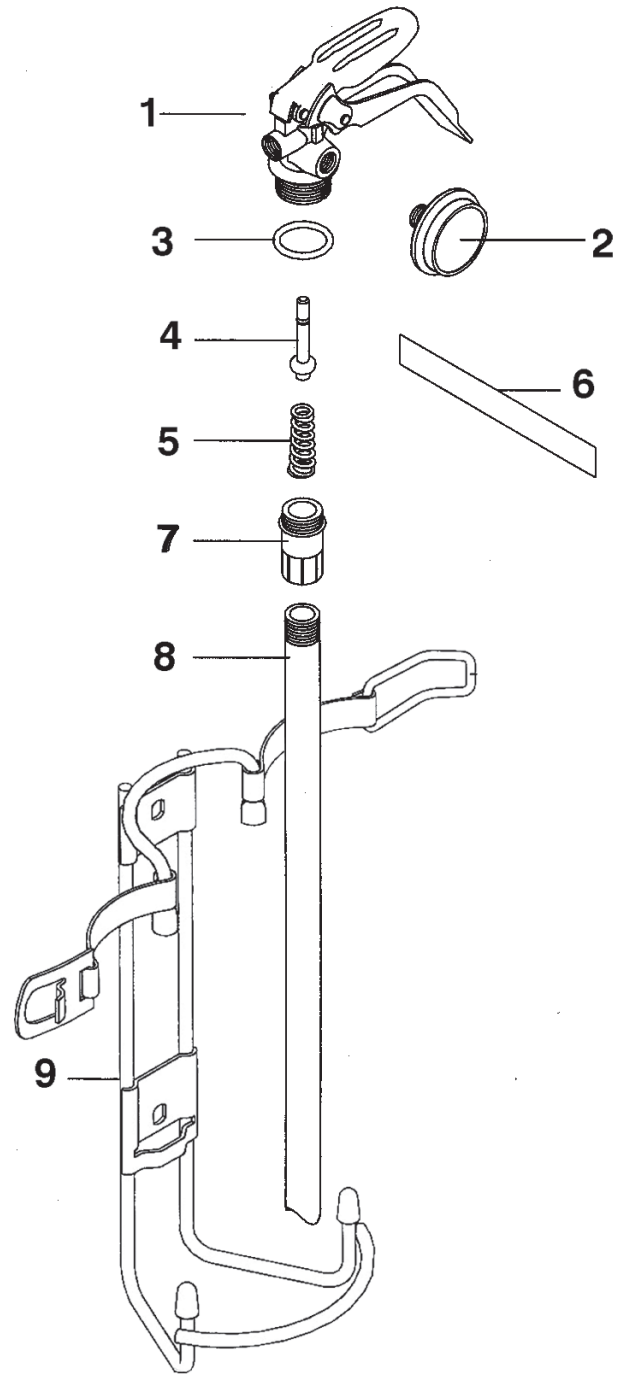
Parts 4.5, 4.5 extended & 9.0 kg

fig	Part nº	Description
1	1800.06801	Valve Assembly
2	1300.25800	Wall Bracket Pack
3	0209.00212	Safety Pin
4	0209.00220	Safety Pin Tie
5	0209.00285	Anti Tamper Seal
6	0209.00185	Pressure Gauge 1345 kPa
7	0308.01022	Neck Seal 'O' Ring
8	1209.00090	Check Stem Assembly
9	0306.01202	Valve Spring
10	0209.00215	Siphon Tube Adaptor Nut
11	0308.00120	Siphon Tube - 4.5 kg
	0308.00121	Siphon Tube - 4.5 kg extended
	0308.00119	Siphon Tube - 9.0 kg
12	1300.97220	Hose Assembly - 4.5 kg BE
	1300.96920	Hose Assembly - 9.0 kg BE
	0209.00043	Hose Assembly - 4.5 kg ABE
	0209.00036	Hose Assembly - 4.5 kg extended
	0209.00044	Hose Assembly - 9.0 kg ABE
13	0308.00244	Hose Retainer Bracket



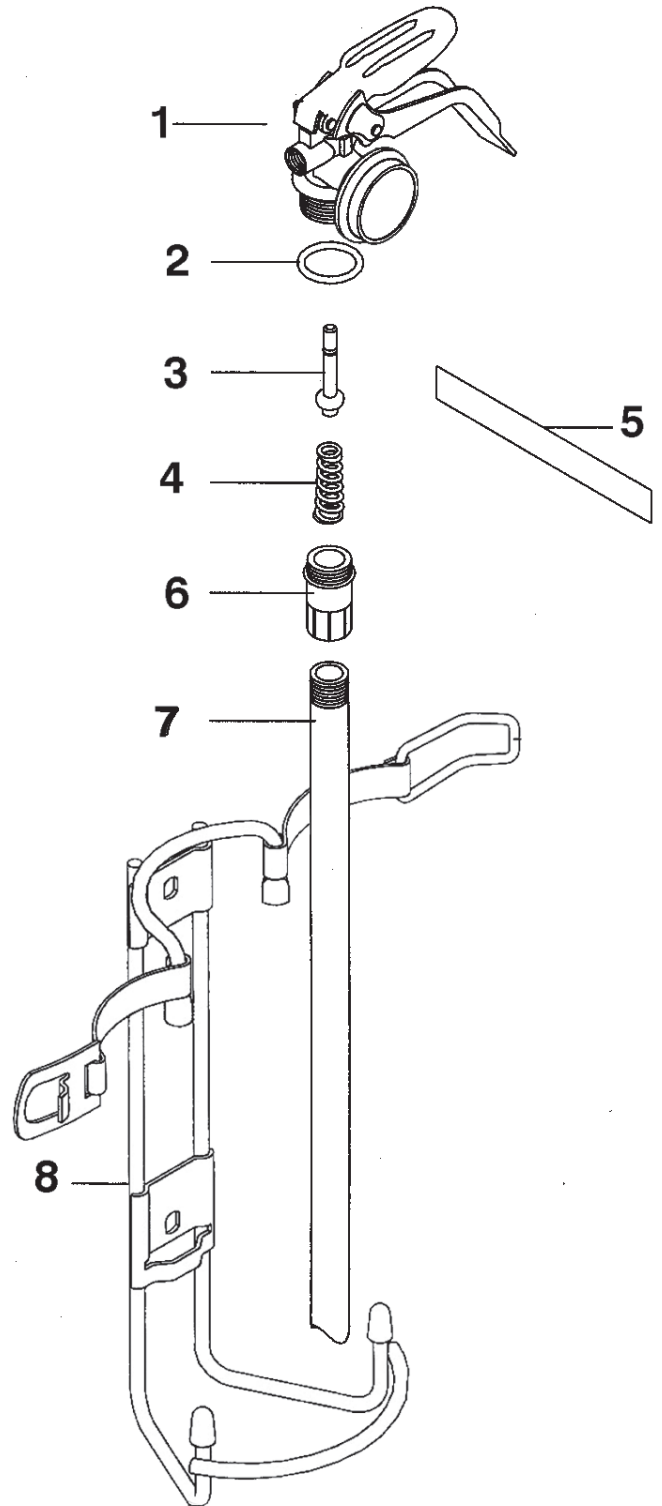
Parts 2.0 kg ABE, 2.3 kg BE

fig	Part n°	Description
1	1800.01201	Valve Assembly
2	0209.00184	Pressure Gauge 1035 kPa - 2.0 kg
	0209.00185	Pressure Gauge 1035 kPa - 2.3 kg
3	1209.00046	Hose Assembly - 2.0 kg
	0209.00209	Hose Assembly - 2.3 kg
4	0308.00214	Neck Seal 'O' Ring
5	1209.00082	Check Stem Assembly
6	0306.00018	Valve Spring
7	1400.01284	Handle Safety Seal
8	0209.00216	Siphon Tube Adaptor Nut
9	0308.00116	Siphon Tube - 2.0 kg
	0308.00112	Siphon Tube - 2.3 kg
10	1336.28800	Mounting Bracket



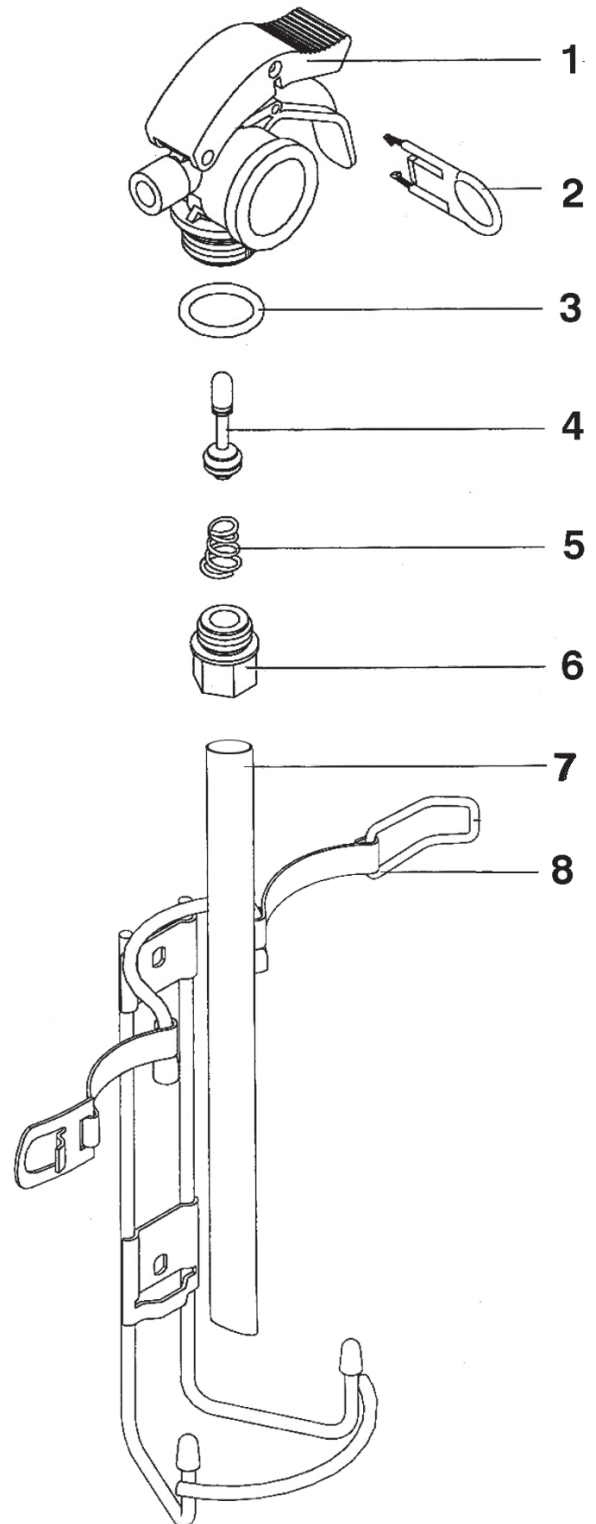
Parts 1.0 kg BE, 1.0 kg ABE

fig	Part n°	Description
1	1800.06401	Valve Assembly - 1.0 kg BE
	1800.05501	Valve Assembly - 1.0 kg ABE
2	0209.00184	Pressure Gauge 1035 kPa
3	0308.00214	Neck Seal 'O' Ring
4	1209.00087	Check Stem Assembly
5	0306.00018	Valve Spring
6	1400.01284	Handle Safety Seal
7	0209.00216	Siphon Tube Adaptor Nut
8	0308.00118	Siphon Tube
9	1334.26000	Mounting Bracket



Parts 1.0 kg ABE

fig	Part n°	Description
1	1800.04201	Valve Assembly with pressure gauge
2	0308.00214	Neck Seal 'O' Ring
3	1209.00087	Check Stem Assembly
4	0306.00018	Valve Spring
5	1400.01284	Handle Safety Seal
6	0209.00216	Siphon Tube Adaptor Nut
7	0308.00118	Siphon Tube
8	1334.26000	Mounting Bracket



Parts 0.8 kg BE, 0.9 & 1.0 kg ABE		
fig	Part n°	Description
1	1800.03710	Valve assembly - 0.8 kg (ø2.5 mm)
	1800.02710	Valve assembly - 0.9 kg (ø3.0 mm)
	1800.03810	Valve assembly - 1.0 kg (ø3.5 mm)
2	0209.00337	Safety pin
3	0308.00227	Neck seal O'ring
4	0209.00279	Check Stem assembly
5	0209.00277	Valve spring
6	0209.00278	Siphon tube Adaptor Nut
7	1300.91132	Siphon tube - 0.8 kg
	0308.00109	Siphon tube - 0.9 - 1.0 kg
8	1300.31600	Mounting Bracket - 0.8 kg
	1334.26000	Mounting Bracket - 0.9 - 1.0 kg